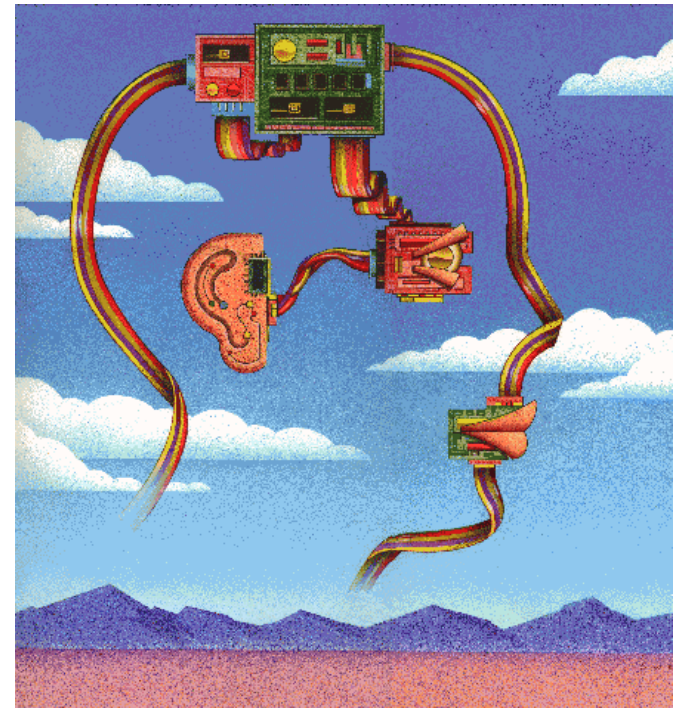


Manufacturing process and design rules

Andreas G. Andreou
Pedro Julian

Electrical and Computer Engineering
Johns Hopkins University

<http://andreoulab.net>



Levels of Abstraction –the CMOS Inverter-

Out = NOT (In)

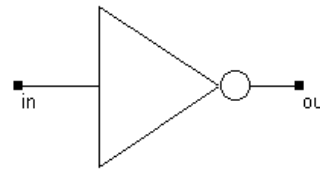
Out = \sim (In)

Equation

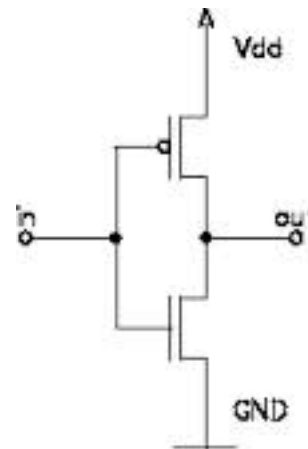
In	Out
0	1
1	0
X	X

Truth Table

LOGICAL



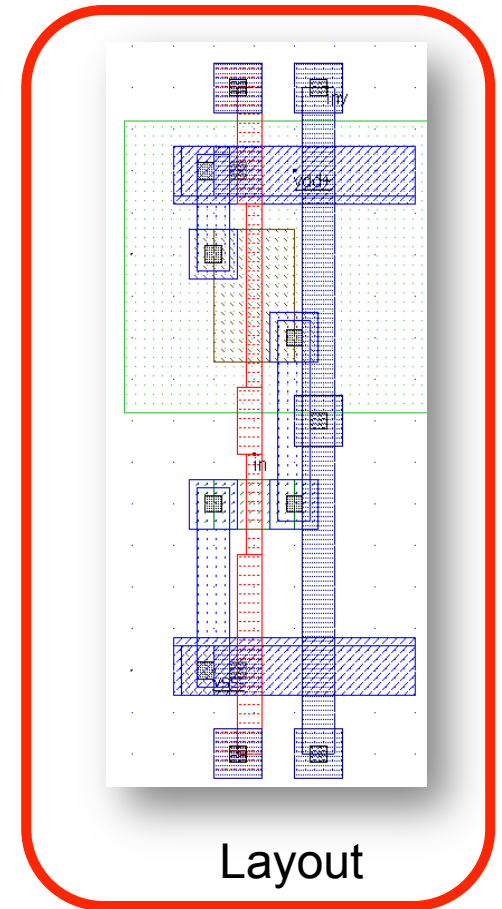
Symbol



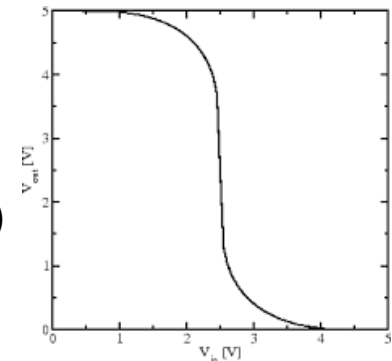
Circuit

Voltage Transfer Characteristics (VTC)

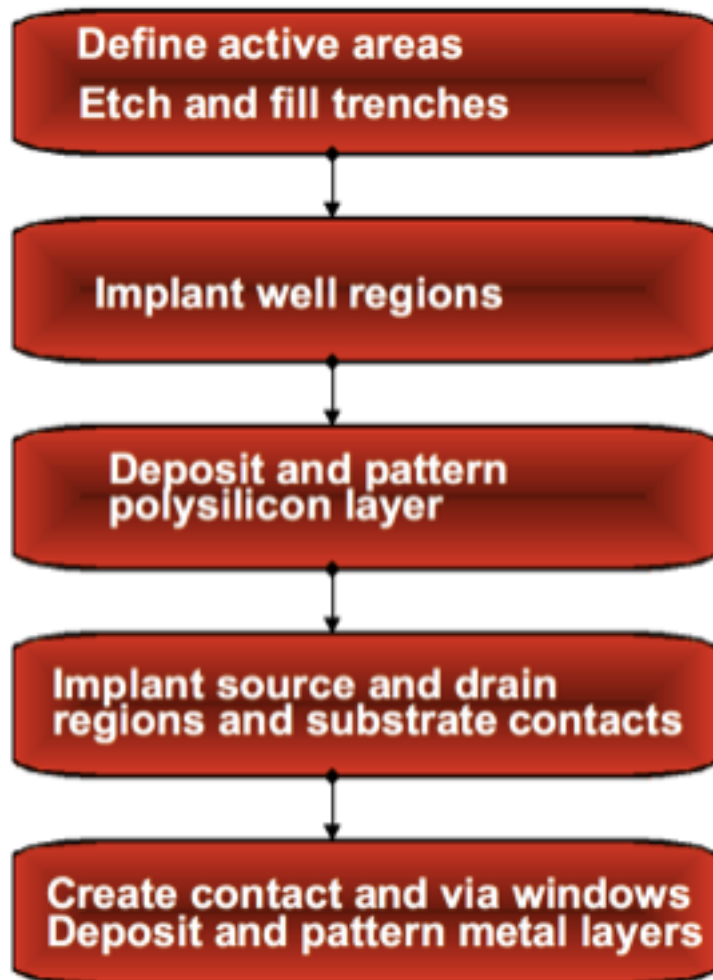
PHYSICAL



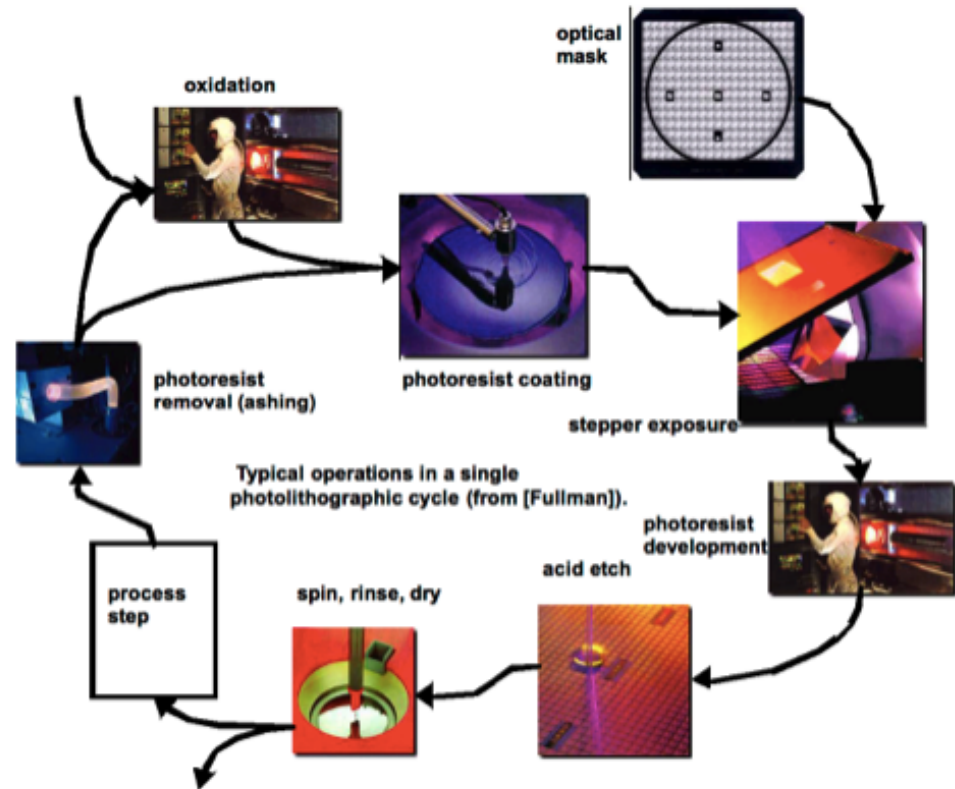
Layout



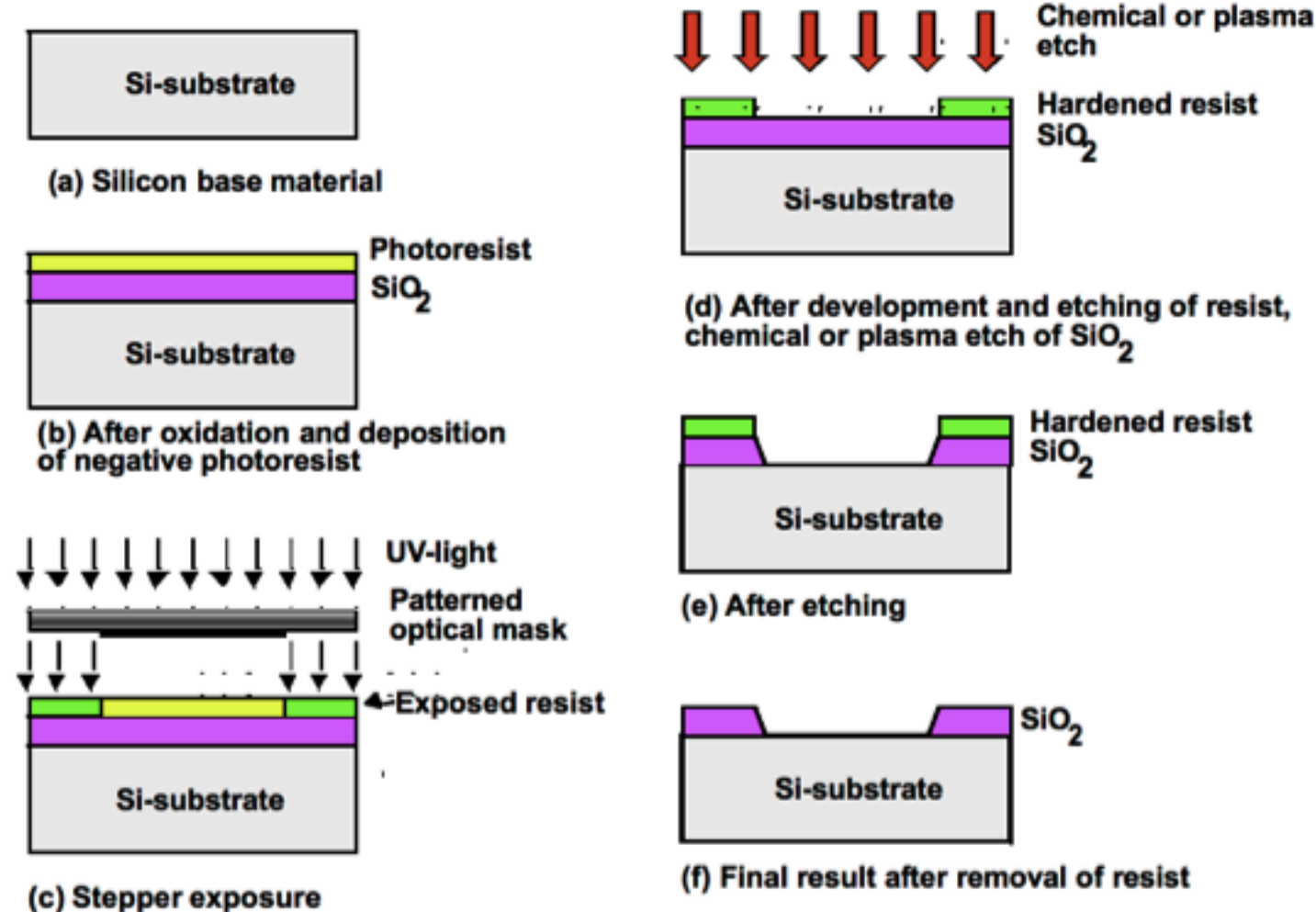
CMOS Fabrication



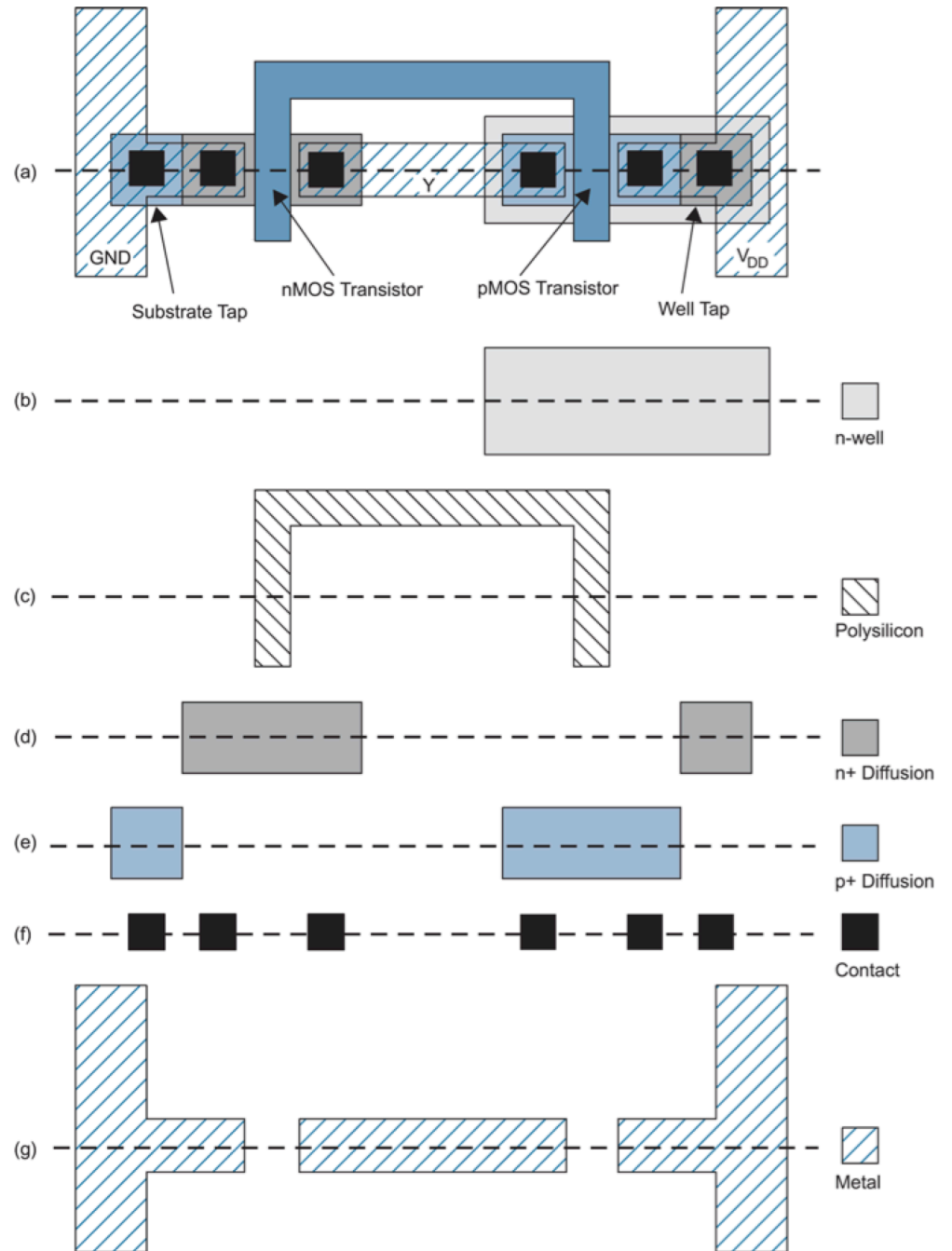
Photolithography



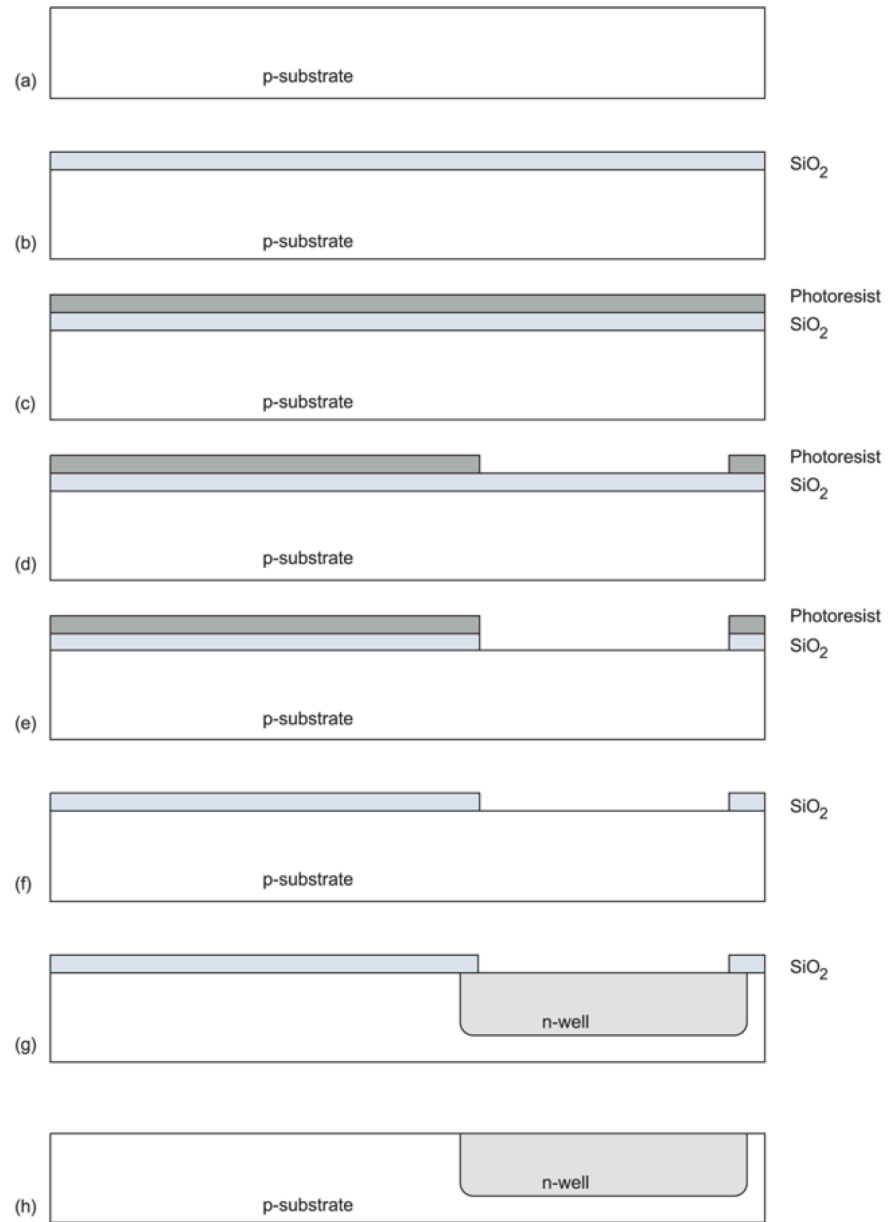
Patterning of silicon dioxide



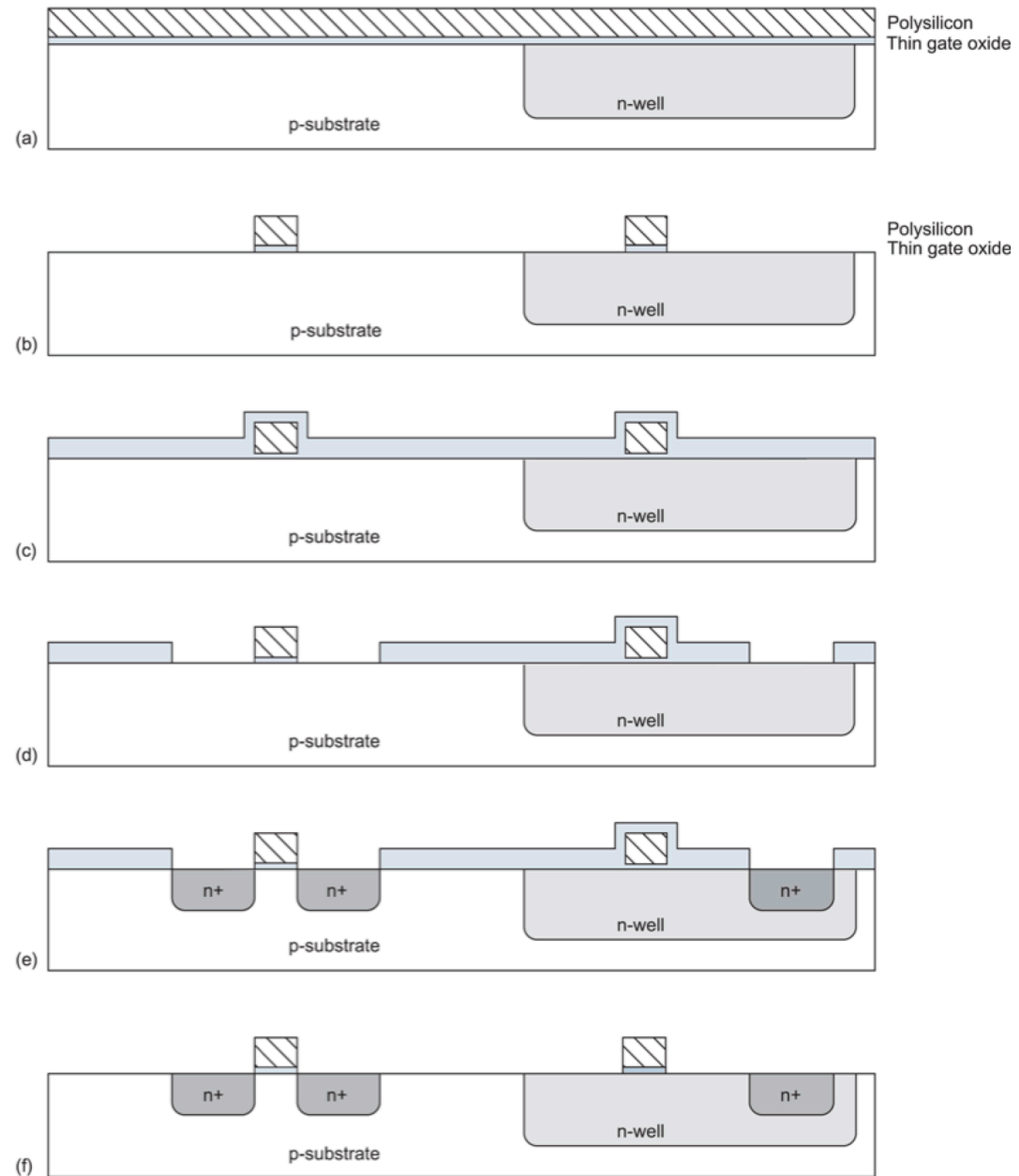
Designing an inverter



Fabrication Process (I)



Fabrication Process (II)



Design Rules

- The interface between the design engineer (**you!**) and the process engineer (the guys in the white space suits!)
- Guidelines for constructing masks (constraints)
- Dimensions:
 - Dimensionless (lambda parameter)
 - Absolute (nanometer)

Design rules

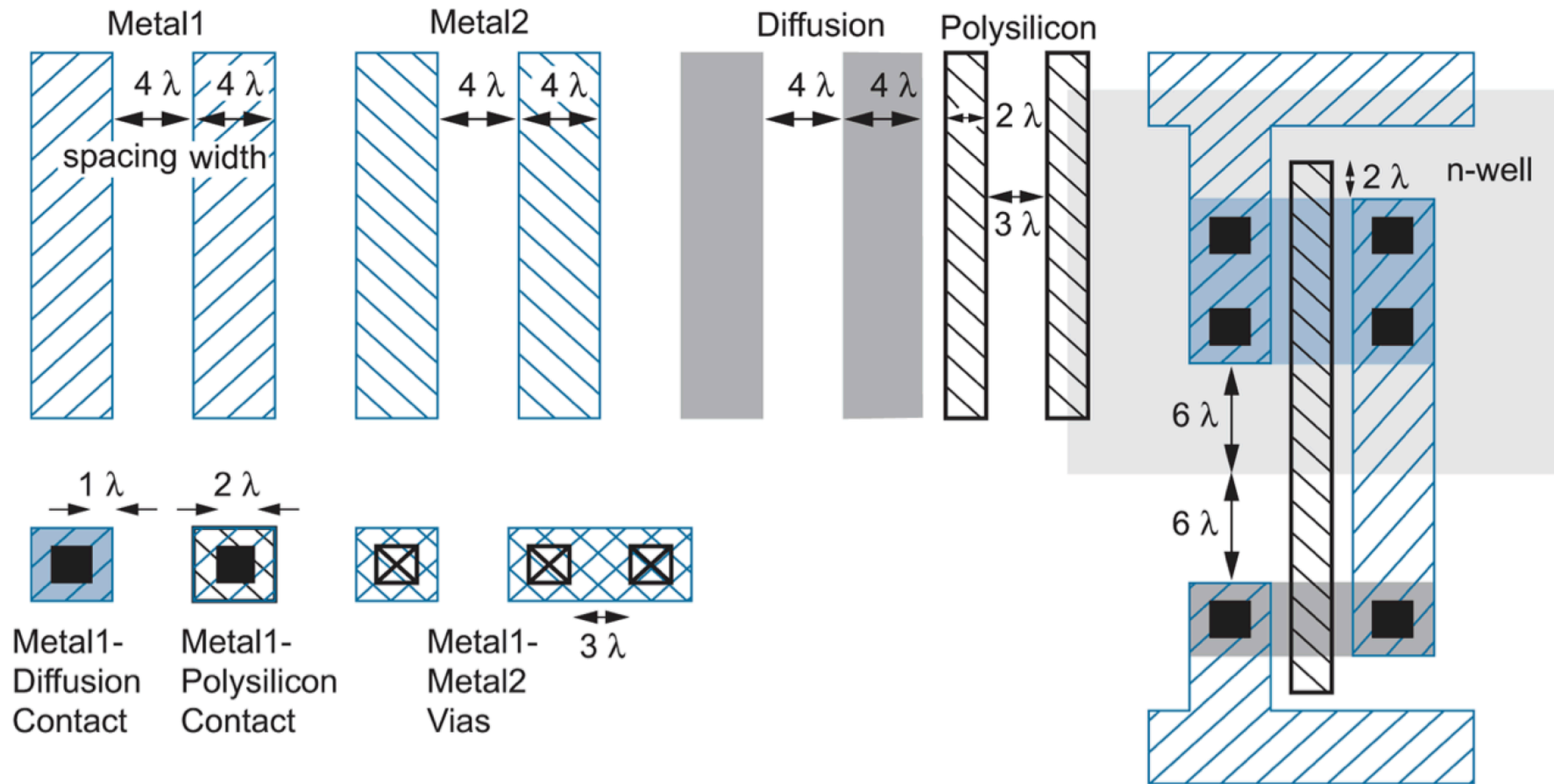
- Objective:

maximum yield and minimizing area

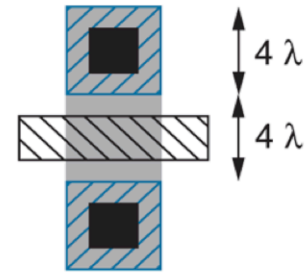
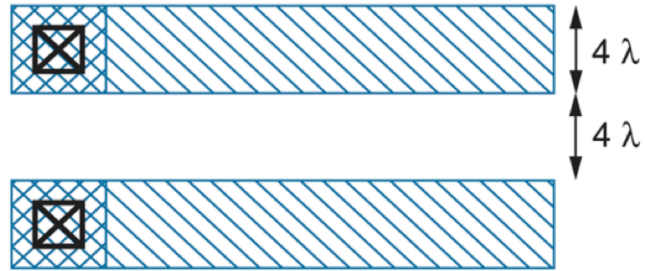
- Rule types

- Width
- Spacing
- Separation
- Extension
- Overlap

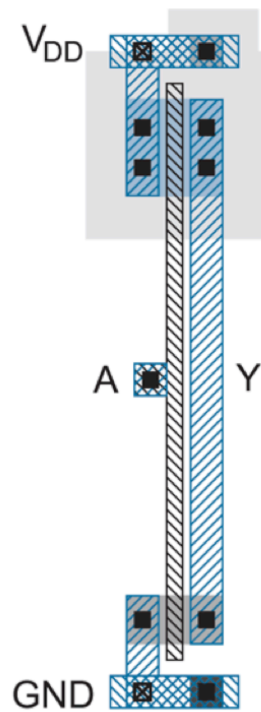
Design Rules (I)



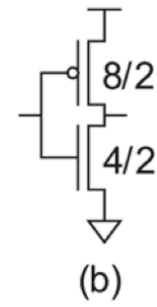
Basic layout constraints



(b)



(a)



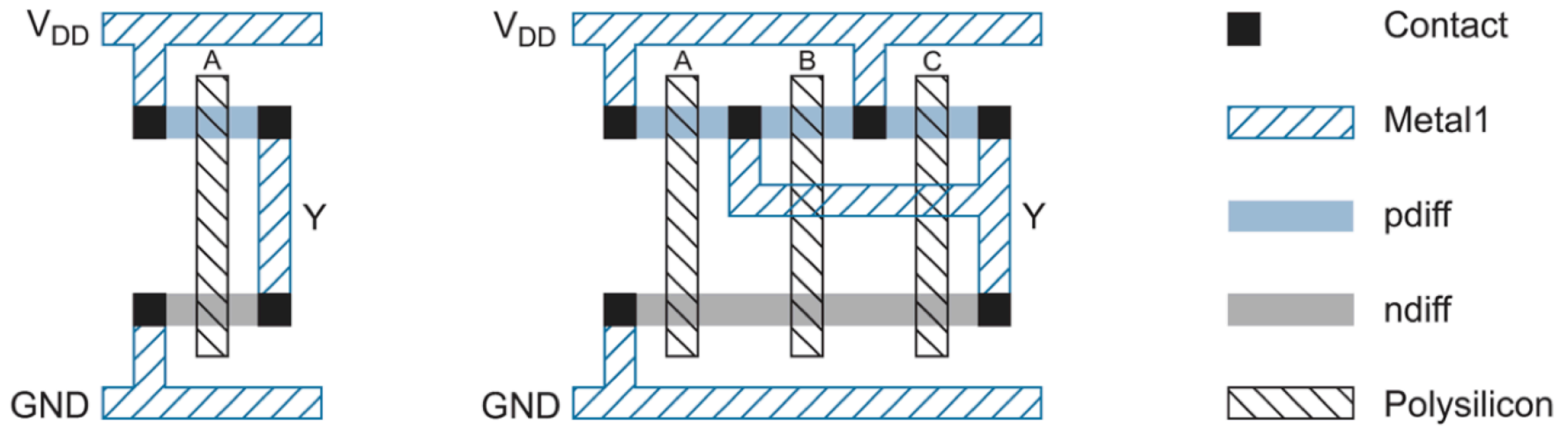
(b)



(c)

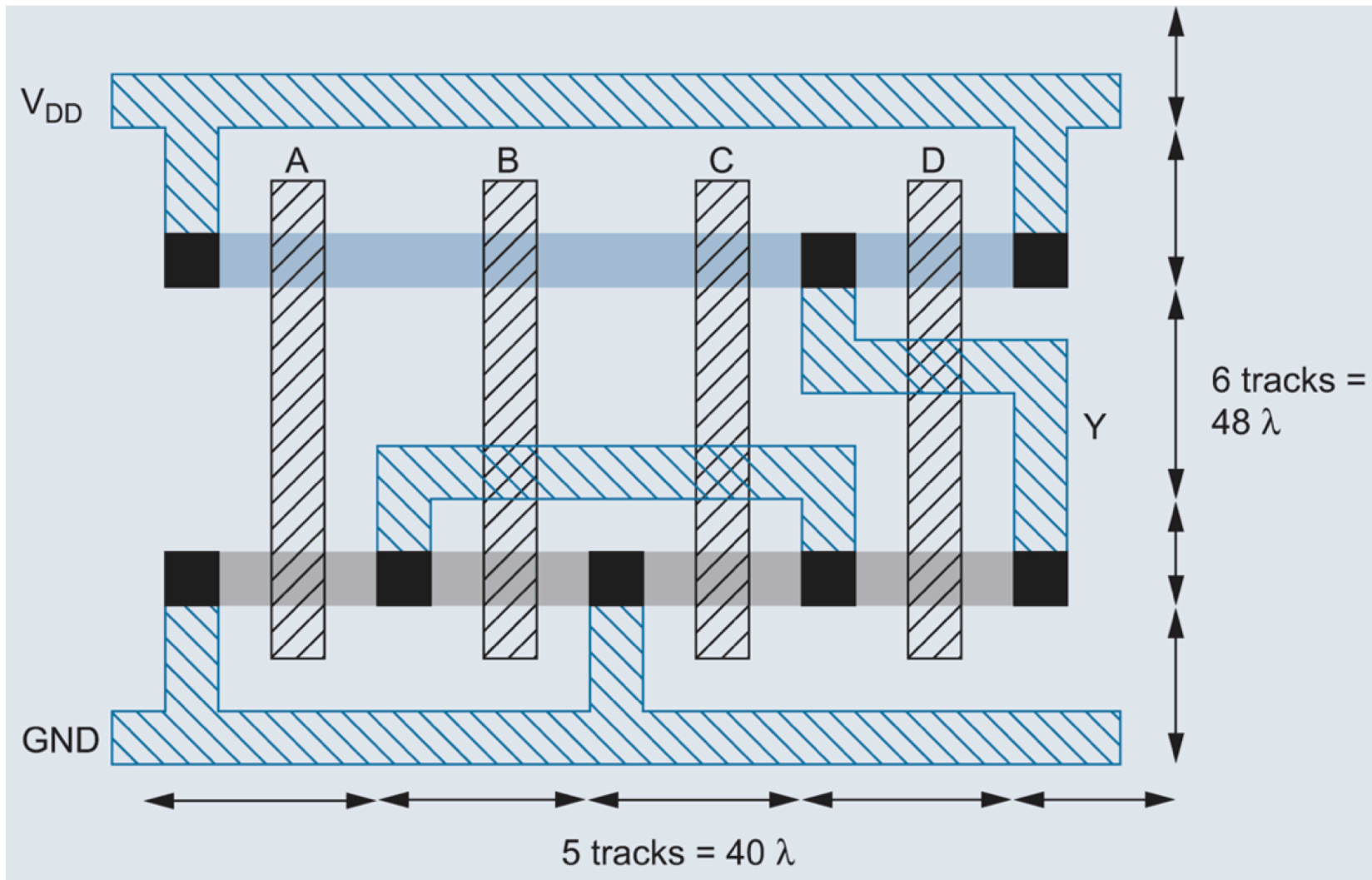
explore with micro-Wind

Layout style for libraries –stick diagrams- (I)



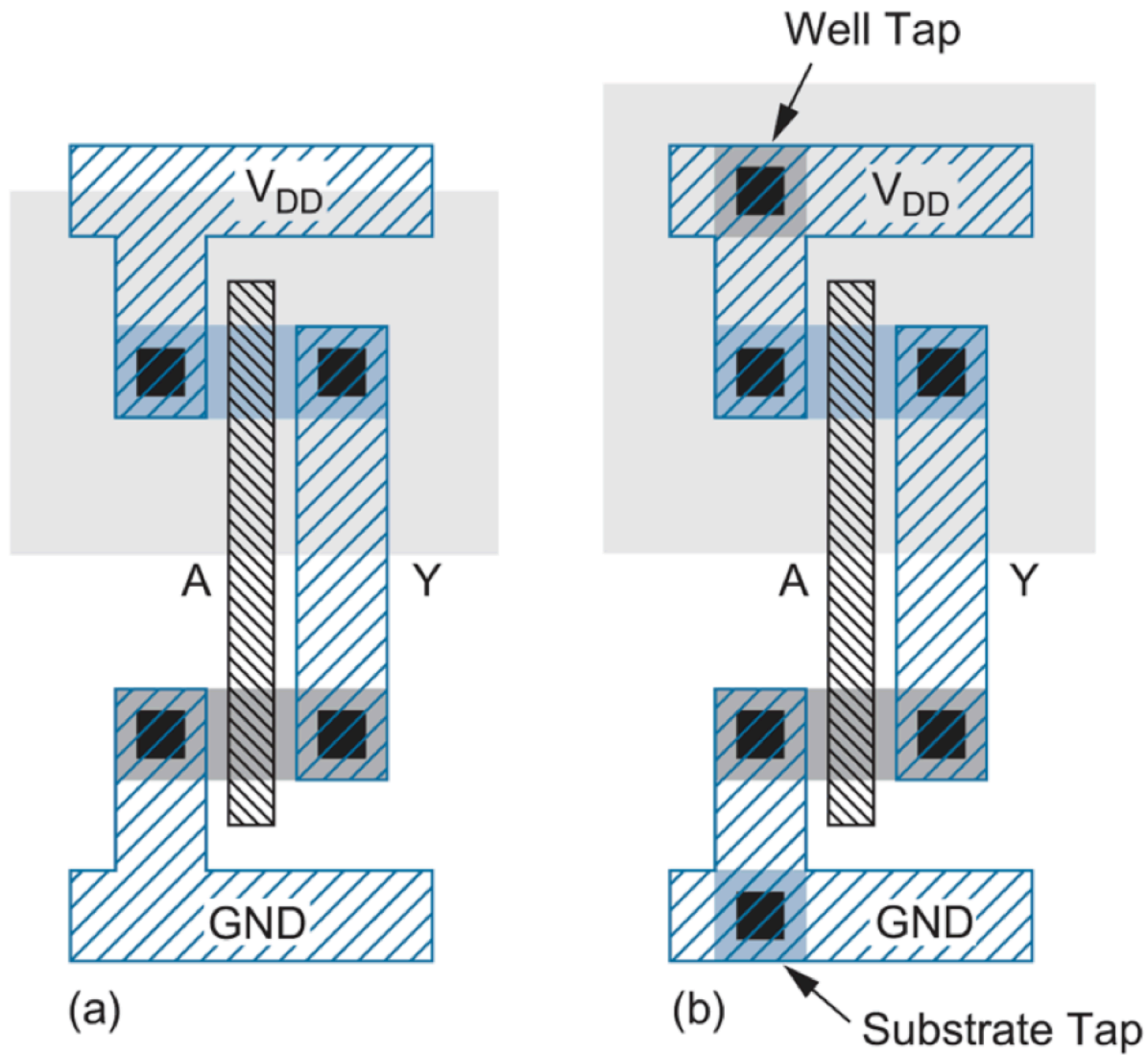
explore with micro-Wind

Layout style for libraries –stick diagrams- (II)



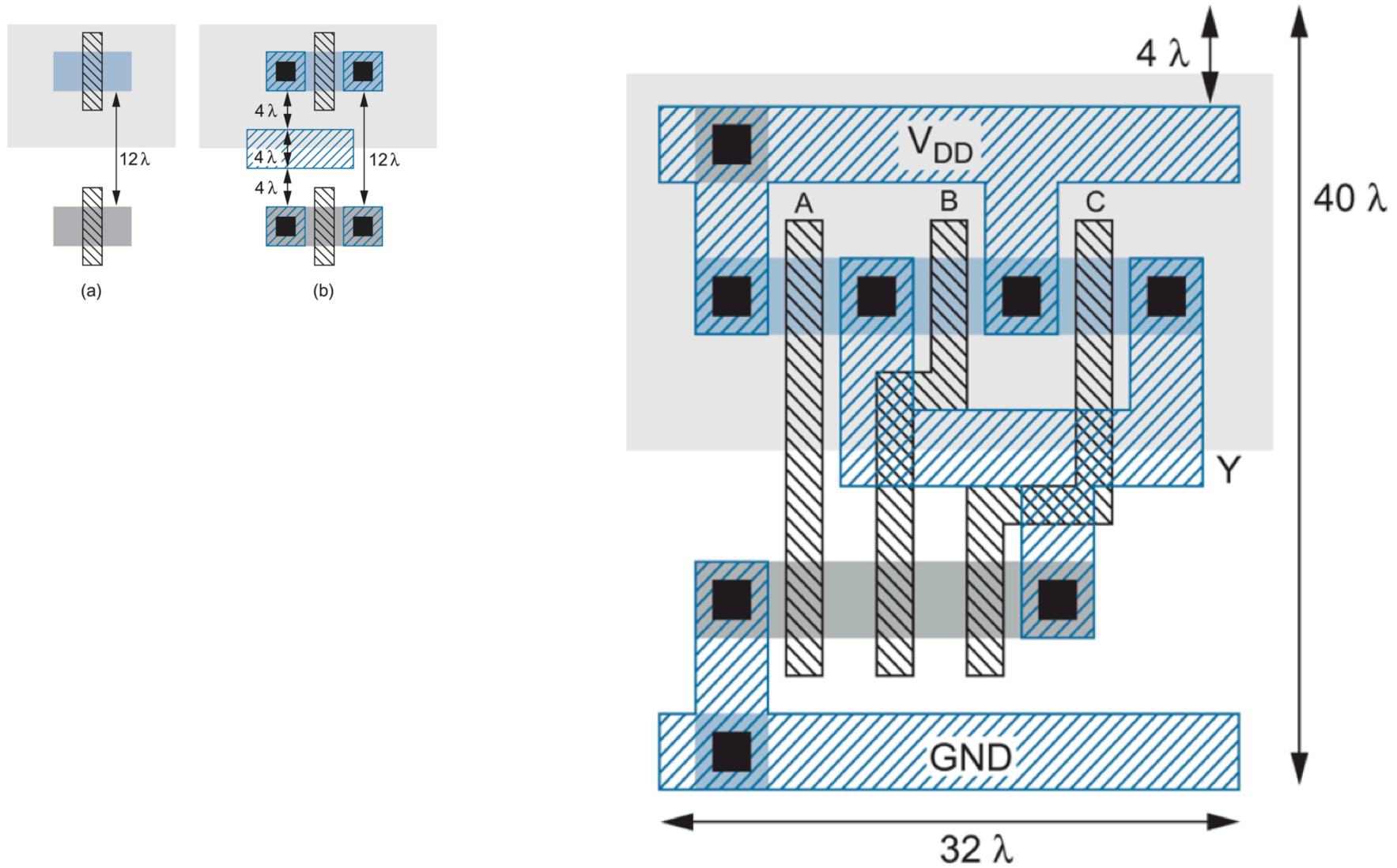
explore with micro-Wind

Substrate and well contact –the fourth hidden terminal-



explore with micro-Wind

Layout style for libraries (II)



explore with micro-Wind

Computer Aided Design Tools

